

HYDE STREET PIER MODEL SHIPWRIGHTS DECEMBER NEWS, 2018



Happy Holidays from the Hyde Street Pier Model Shipwrights!

'Tis the season! The weather has gotten colder, and a bit damper here in the San Francisco Bay Area, but that just makes it a great time to do some ship modeling. It's also that time of year to tell Santa to bring you the ship model kit you've been eying for the past many months.



If you don't get that ship model kit you want, you can always get yourself one after the holidays and start the new year off right.

If you don't have the money to buy a whole kit, it's a great time to start that scratch-build project. And, I bet you've got at least one kit in the closet waiting for you to get to it.



Whatever you do, here's hoping you'll have a wonderful holiday season full of friends and family...

And don't forget, you have friends and family here at Hyde Street Pier Model Shipwrights, so make sure to get over to our meeting this Saturday and spend some time with the crew!

November Meeting Notes

Our November meeting took place as usual on Saturday, November 17, at 9:30 a.m. aboard the *Eureka*. More light attendance due to member travel plans and health issues. Also, the air quality was extremely bad due to the Camp Fire, which turned out to be the deadliest fire in California history. In fact, due to air quality issues, the Park was officially closed to the public, but we were allowed to hold our meeting as usual.

Announcements and Club Business

Treasurer's Report

Paul Reck was present this month, so we did get an official treasurer's report: We have money in the bank. However, in the weeks following the Camp Fire and the destruction of the town of Paradise, Paul sent out an email to the group about making a donation to the North Valley Community Foundation to help the victims of the fire.

Web Report

Clare Hess reported that visits to our website, www.hspms.org, continue to be down a bit, with 75 visitors in October. Most visitors are finding us via Google searches and links from Facebook.

As always, we are looking for interesting things to post on our website and for members to post their own ship modeling related photos, like visits to museums and such.

Show and Tell Segment

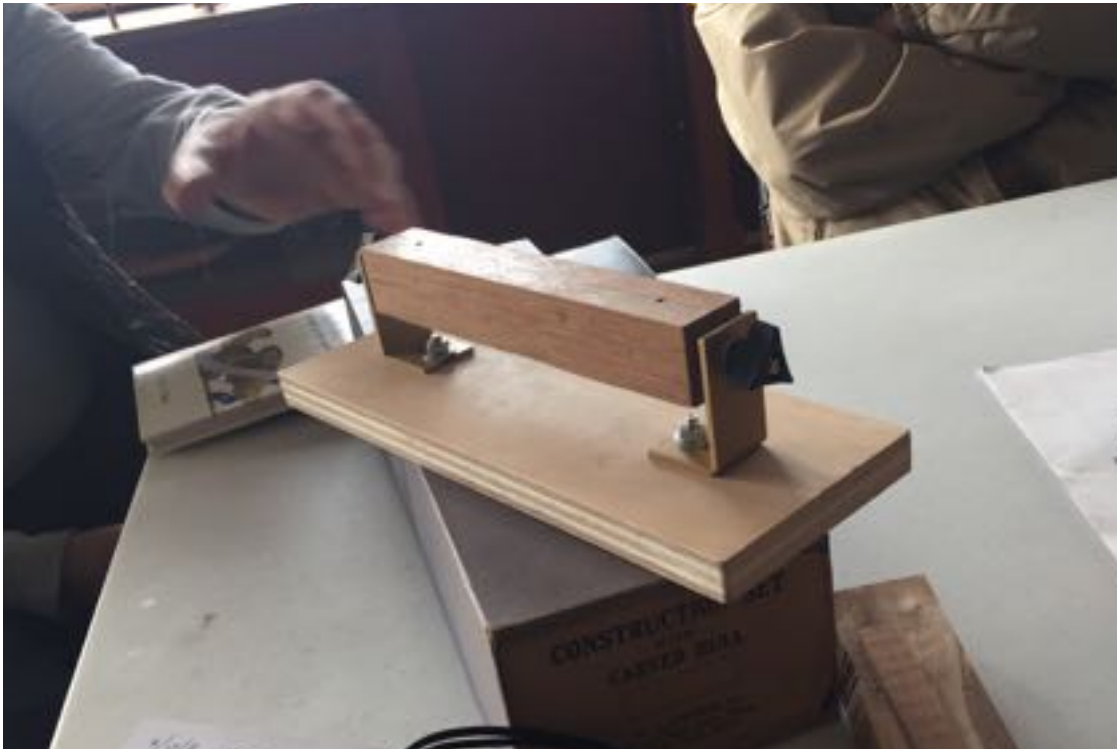
Tom Shea is still working hard on his USS Niagara model in 1/64 scale. He showed us the large amount of detail that needed to go into the bowsprit, which he had just completed.



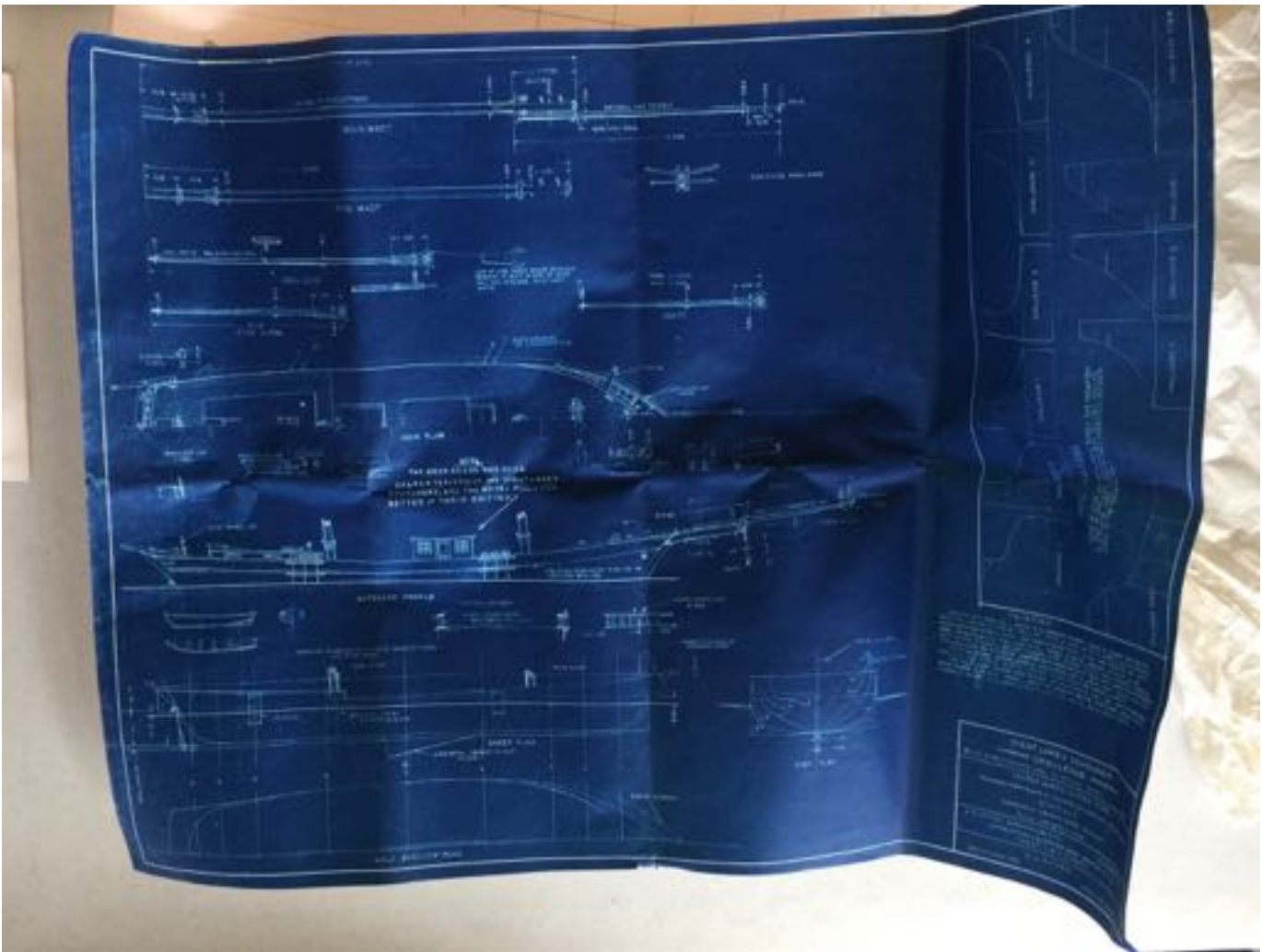
Unfortunately, he discovered that while everything is perfectly proportioned, after all the amount of great work he put into it, the whole thing is slightly out of scale and it's too long for the already lengthy model (43").

There was a brief discussion about ways to make the correction, which ranged from redoing the whole thing, to cutting out a section, to leaving it alone. Tune in next meeting to find out what Tom does!

Warren Gammeter brought in his completed adjustable model workstand, based on Paul Reck's design. He discussed some of the issues he had with the adding of the mounting posts and how he resolved them. Paul Reck explained how he deals with this issue on his workstands.

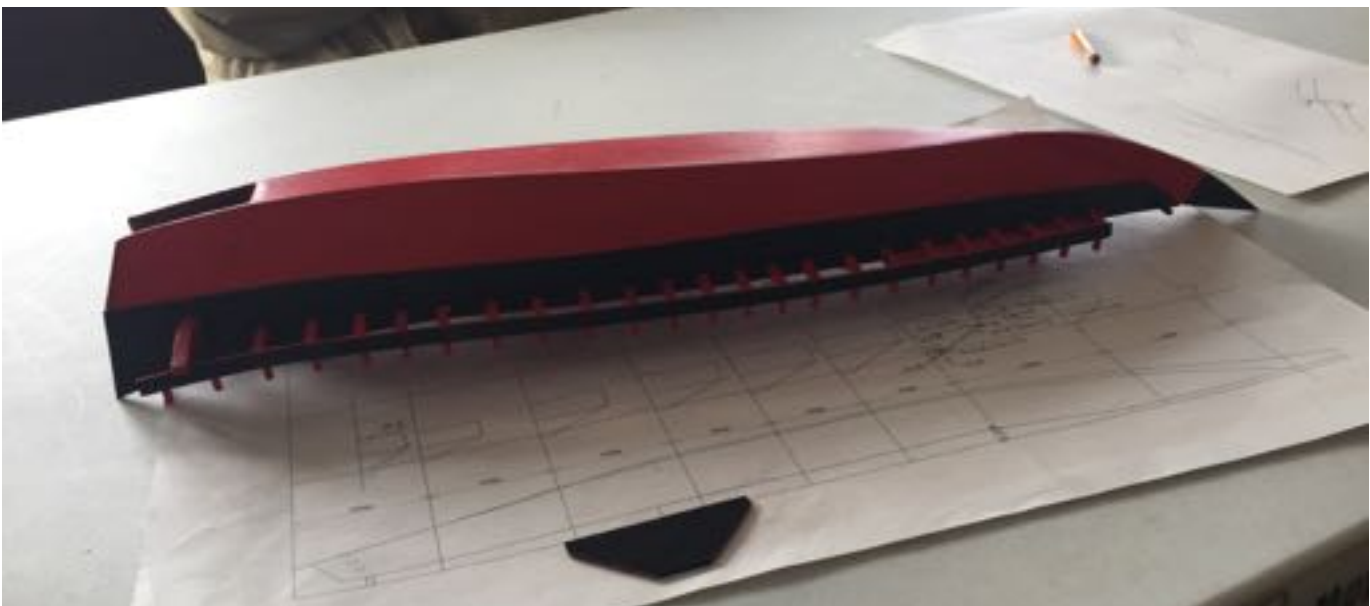


Warren also showed us the hull of his old A.J. Fisher kit of the Great Lakes schooner, Challenge. This kit was re-released by the company a few years back, but Warren has an older, original kit.



We'll be looking forward to seeing his progress on this interesting, 1/8" scale model.

Clare Hess again brought in his 1/32-scale scratch built model of a mid-19th century ship of the Shogūn's government called a Kobaya. The model has been painted and stanchions for the railing was added.



The model is being built from the most detailed drawings done of one of these vessels, which was by French naval officer Armand Paris in 1868, and just about all of the structural work has been completed.

Clare has been using acrylic paints on the model, but the real vessels were painted with Japanese lacquer. The vessel was also covered with gold patterns, small copper plates over the nail fastenings, and what are probably gold painted copper plates over the ends of major beams.



Paul Reck and Tom Shea discussing ship model issue, the Kobaya is in the lower foreground.

Any corrections? Let me know at catopower@mac.com.

**Next meeting is Saturday, December 15th
9:30 am Aboard the Eureka
Please bring your projects to share and discuss!**

Visit our web site at <http://www.hspms.org>

Visit us on Facebook at <http://www.facebook.com/hydestreetpiermodelshipwrights>

THE NAUTICAL RESEARCH GUILD

"ADVANCING SHIP MODELING THROUGH RESEARCH"

Annual membership includes our world-renowned quarterly magazine, Nautical Research Journal, which features photographs and articles on ship model building, naval architecture, merchant and naval ship construction, maritime trade, nautical and maritime history, nautical archaeology and maritime art.

Other benefits include discounts on annual conferences, ship modeling seminars, NRG products and juried model competitions which are offered exclusively to Guild members. We hope you will consider joining our ongoing celebration of model ships and maritime history.



For more information contact us at: www.thenrg.org or call 585 968 8111

Model Kits • Tools • Fittings • Accessories

AGES OF SAIL

www.agesofsail.com

510-889-6000

HSPSM Members Get 10% Off Any Purchase